

Barrow 七彩虹 烈焰战神 RTX2080T

全覆盖显卡冷头

安装教程(实例示范)

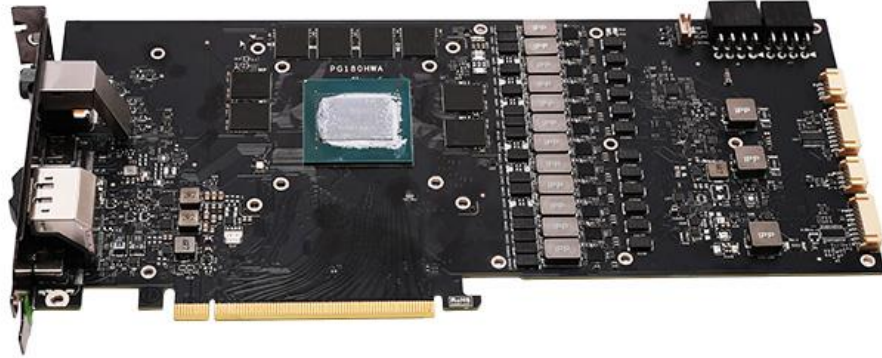
INSTALL TUTORIAL (DEMONSTRATION)



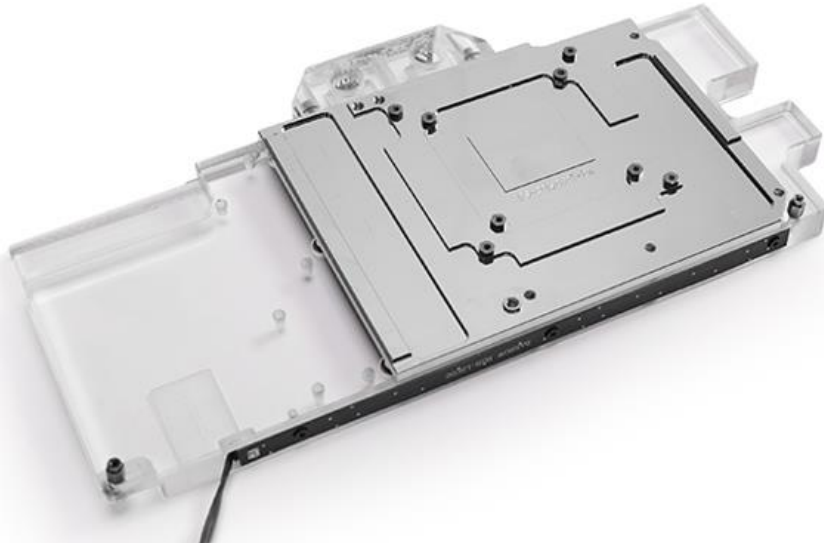
1. 拆除图中标红位置螺丝



2. 拆除图中标红位置螺丝

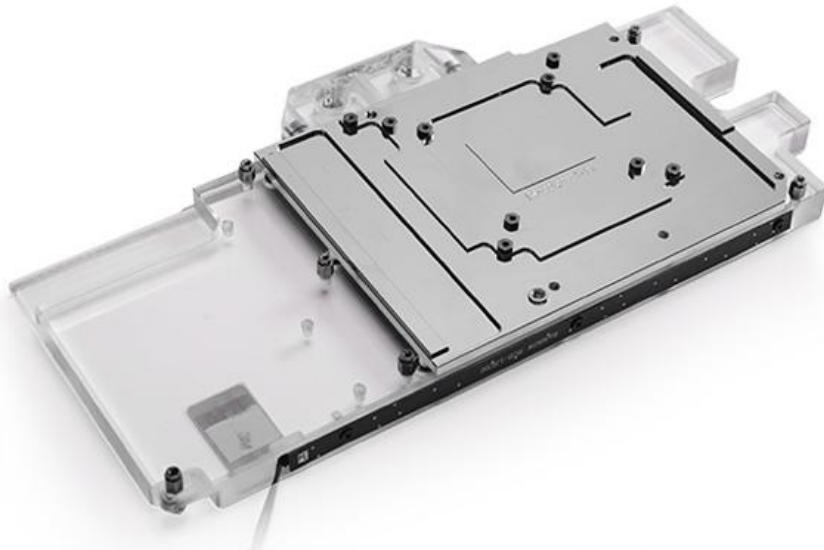


3.清理并重新涂抹导热硅脂

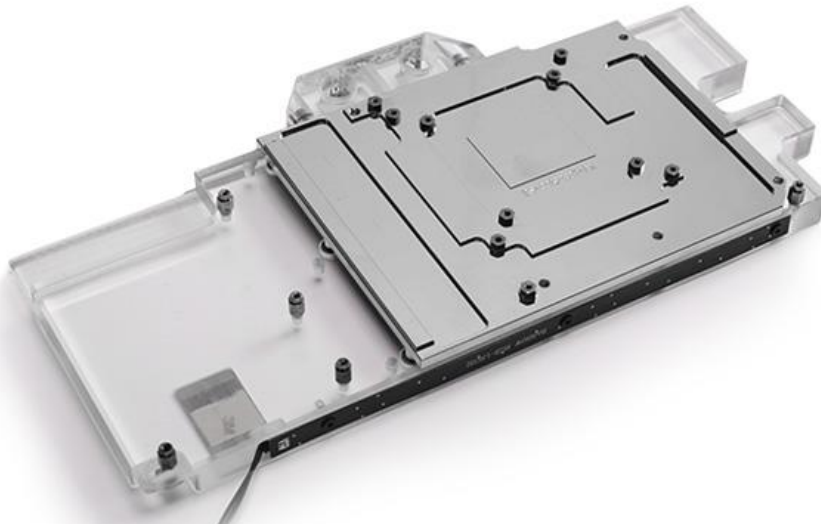


图示为显卡冷头出厂默认铜柱安装

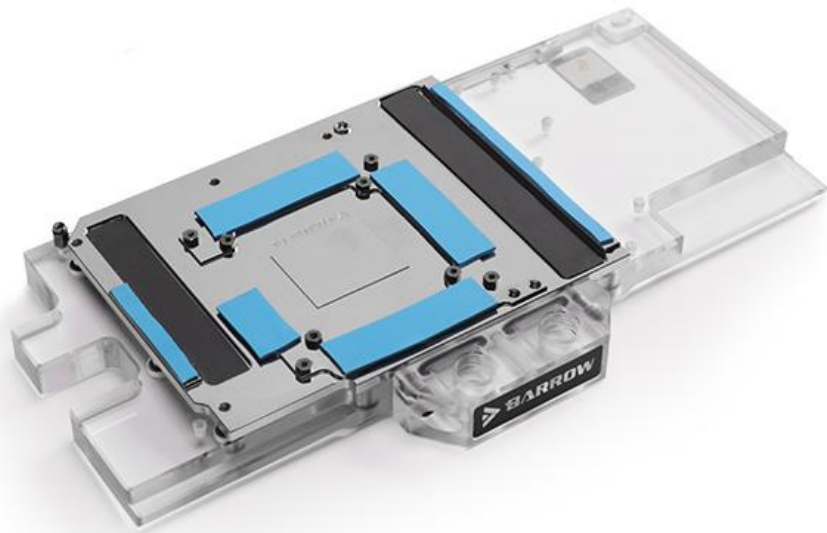
4.铜柱安装示例



此安装示意图适用于2070、2080显卡安装



此安装示意图适用于2080T显卡安装



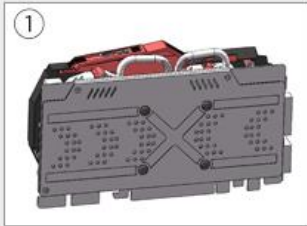
5.在相应位置贴好相应规格导热硅脂条，注意剪切尺寸

安装教程(图纸示范)

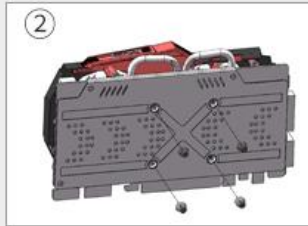
DEMONSTRATION INSTALLATION TUTORIAL (DRAWING)

第一步：原装散热器拆除

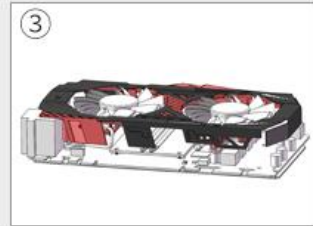
THE FIRST STEP: ORIGINAL RADIATOR REMOVED THE FIRST STEP: ORIGINAL RADIATOR REMO



原装显卡



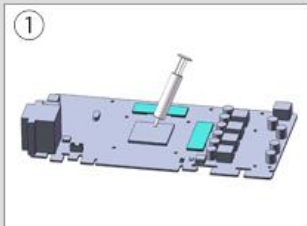
拆除原装显卡背板螺丝



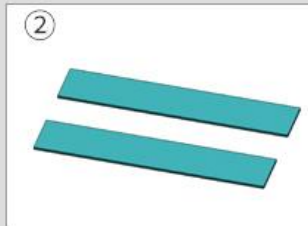
拆除风扇的电源线并分离原装散热器

第二步：涂抹硅脂/黏贴硅胶垫

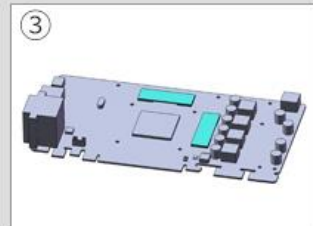
THE FIRST STEP: ORIGINAL RADIATOR REMOVED THE FIRST STEP: ORIGINAL RADIATOR REMOVEDAL RADIAT



清理原电路板及芯片的残留硅脂并重新涂抹一层薄薄的硅脂



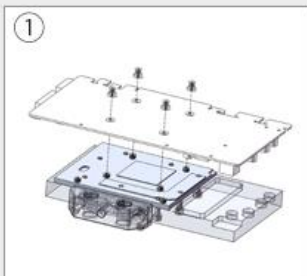
将导热胶垫切为合适的尺寸



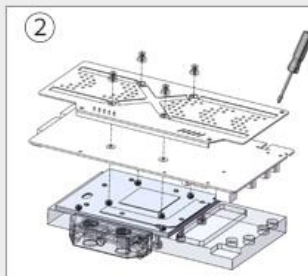
贴在显卡的发热芯片上

第三步：安装冷头

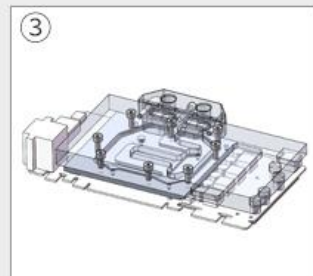
THE FIRST STEP: ORIGINAL RADIATOR REMOVED THE FIRST STEP:



将显卡冷头底板螺丝对准显卡螺丝孔位使两者贴合



显卡原装背板孔位对准贴合用弹簧螺丝锁紧



安装完成

* 注意：如不安装显卡背板，需在安装孔位放置绝缘垫片再用弹簧螺丝锁紧。
通用版本图纸安装示范教程，具体安装细节有可能根据不同显卡略有不同，以实物为准。